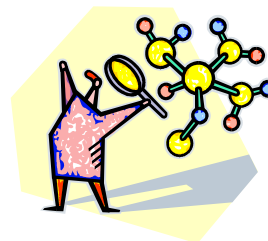


# Molecular Models



## Directions:

1. At each station, there is an index card with two or more molecular formulas and materials to make the molecular models.
2. Create the model and complete the data table. Have it checked by your teacher.

**Pre-Lab:** Using your periodic table and materials at your desk, complete the following data table.

Element	Symbol	Color	# of holes	Lewis Structure	Metal or Non-Metal?	Gives e's away or takes/shares?
	C	○				
	H	○				
	O	○				
	Cl	○				
	Na	○				
	K	○				

(Metal + Non-Metal) = \_\_\_\_\_ Bond & (Non-Metal + Non-Metal) = \_\_\_\_\_ Bond



*Cut along dotted lines and paste into lab journal*

## Analysis:

1. What do the holes in the model represent?
2. What is the difference between an Ionic Bond and a Covalent bond?
3. How can you predict if a bond will be ionic or covalent by using the periodic table?
4. What is an Isomer?

## Conclusion:

Write 2-3 sentences on what you learned by doing this activity.

Place one per top of page in lab journal as needed. Students will complete the chart on each page using a ruler to continue the lines and making rows as big as they need to complete each model.

Formula	Count atoms	Draw & Color Model	Lewis Structures	Type of Bond

Formula	Count atoms	Draw & Color Model	Lewis Structures	Type of Bond

Formula	Count atoms	Draw & Color Model	Lewis Structures	Type of Bond

Formula	Count atoms	Draw & Color Model	Lewis Structures	Type of Bond

Formula	Count atoms	Draw & Color Model	Lewis Structures	Type of Bond